



2017-2018 Annual Report



*"The day you plant
the seed is not
the day
you eat the fruit"*
Author Unknown

WORKING TOGETHER TO BUILD STRONG COMMUNITIES



The Branch County Community Foundation is an IRS-recognized nonprofit charity that serves Branch County and Colon, Michigan.

Our mission is to promote charitable giving, build endowments and other charitable funds, and connect community resources. One of our main purposes is to encourage people to give locally – give where we live, where we can see the results, and where we can make a place for our children and grandchildren to thrive. We also help create different “accounts,” what we call funds, and give a portion of those funds away each year in financial support to other charitable organizations and for scholarships to individuals going to colleges and trade schools. As an organization that looks at all of the qualities of the place we call home, the Community Foundation finds ways to connect groups working on the same issues, identify local resources that we can build on, and convene local leaders that are interested in working with us to improve the quality of life in our neighborhoods and small towns.

Promoting Charitable Giving

We champion local charitable giving because local dollars focused on locally-created solutions work better than state and federal grants with highly restricted uses. And so, in

addition to raising funds within our organization, we support the fundraising efforts of other area charities. When our charitable partners are strong, they have the capacity to join us in tackling some of the more difficult issues that our communities face.

Building Endowments and Other Charitable Funds

We work with donors who want to make a difference by creating permanent, long-term, and short-term charitable funds. We currently hold over 130 charitable funds. With those assets we are able to support the arts, education, economic development and jobs creation, homelessness prevention, children and families that experience food insecurity, public space renovations, and more! In addition to current gifts, many donors have made provisions in their wills or trusts, so they can continue to support the causes they care about and create a lasting legacy.

Connecting Community Resources

We’re better together. We serve on over fifteen local, regional, and state alliances. Indeed, the Community Foundation was created through such partnerships.

WHO WE ARE

Forever Fund Donor Event
left to right: Andrew McRae, Dannielle
McRae, Richard Wendorf, Colleen Knight

Vision/Values

We believe

- in working together to build strong communities
- in openly sharing who we are and how we operate
- in honoring donor intent
- in creating beneficial outcomes for all
- in creating mission-based financial sustainability so that we can continue to serve in perpetuity

Mission

We promote community philanthropy, build endowments and other charitable funds, and connect community resources.

Business Model Statement

The Branch County Community Foundation promotes community philanthropy, builds endowments and other charitable funds, and connects community resources through fees for services, sponsorships, and unrestricted gifts.

Impact Statement

The Community Foundation creates positive social change by providing funding, promoting education on social issues, and leveraging community resources.



History

In 1990, the Coldwater Rotary Club had \$50,000 in its foundation (most of it coming from their annual Rotary Show). As the Club's foundation committee discussed how they were going to invest in Coldwater, they began to think about the many, long-term benefits of a county-wide foundation. They also thought about helping to find a way to encourage others to invest as well. In November 1991, the Coldwater Club held a meeting with other local Rotarians who soon joined the effort. The founding Rotaries then reached out to Council of Michigan Foundations for their expertise. By the end of 1992, the Branch County Community Foundation was official.

That initial \$50,000 donation, a WK Kellogg Foundation matching grant, and over 4,000 donors helped the endowments entrusted to us grow to over \$7 million, and has allowed us to give away \$13 million in grants and scholarships. For the past 21 years, we've been given beautiful office space in the garden level of Southern Michigan Bank & Trust's building at 2 West Chicago Street, Coldwater. That's the power of working together.

Current staff includes Colleen Knight, who has served as the director for over 20 years; Erica Heminger, who is in charge of program and donor relations; and our administrative assistant, Brittany Whitfield. There are also three advisors who mentor our youth grant-makers (Youth Advisory Council).

In addition to staff, there are over 30 volunteers serving on committees and our board of directors. Our fifteen-member, donor-led board, consists of volunteers from all over Branch County and the Colon area and two members of our Youth Advisory Council. These dedicated volunteers have expertise in business, governance, finance and other skills we need to operate transparently, efficiently, and effectively.

There's so much more we'd like you to know! To learn more, you can contact us at 517-278-4517 or info@BrCoFoundation.org.



Board Chair Connie Winbigler (center left) and former board member Dave Wright (center right,) at Annual Community Celebration

BOARD OF DIRECTORS & STAFF

Donors, from all of the communities in our service area, comprise the Community Foundation Board of Directors. These individuals make significant gifts of their time, talent, treasure, and ties. Board members serve limited terms and without compensation.

2018 Directors & Officers

Connie Winbigler (Coldwater), Chair
Ron Rose (Litchfield), Vice Chair
Rachel Hard (Quincy), Secretary
Josh Jones (Coldwater), Treasurer
Keely Beemer (Union City)
Rick Chard (Bronson)
Ben Fagen (Youth Advisory Council)
Anne Freiburger (Colon)
Don Germann (Coldwater)
Chuck Lillis (Coldwater)
Patti Miller (Colon)
Wally Newkirk (Quincy)

Directors Emeritus

Paul Creal (Bronson)
Hillary Eley (Bronson)
Robert Mayer (Bronson)
Remus Rigg (Coldwater)
Patricia Klein Shoemaker (Coldwater)

Staff

Colleen Knight, CEO
Brittany Whitfield, Admin. Assistant
Erica Heminger, Program & Donor Services
Rochelle Agar, YAC Advisor
Mike Tighe, Program Associate
Sarah Gruza, Admin. Assistant Intern

TYPES OF GIFTS ACCEPTED

The Branch County Community Foundation is extremely flexible in the types of assets that may be used to make a contribution to an existing fund or start a new fund. Donors may contribute gifts during their lifetimes and through wills or trusts. And gifts may be made in memory of or in honor of a loved one.

Cash

Gifts of cash are most popular for many people who make contributions to the Foundation. The cash gifts contributed each year help the community's endowment funds grow and allow the Community Foundation to expand our support to the community through grants.

Securities

The Community Foundation gratefully accepts gifts of securities. If either public or private securities have appreciated over time, the owner may incur substantial capital gains taxes if the stock were sold outright. The donation of appreciated securities can offer the donor attractive income tax benefits, including relief from capital gains tax liability.

Life Insurance Policies

Many people are surprised to learn that their life insurance policies can become a charitable gift. Life insur-

ance is usually purchased to protect the family from financial loss due to the death and loss of income of one or more family members. Normally, the need for life insurance protection lessens as an individual grows older. Children are grown, self-supporting, and through college; the mortgage has been paid; and an estate of other assets has been acquired. The insurance has served its original purposes, and can become a gift to the Community Foundation. The donor receives an immediate tax deduction (usually equal to the cash surrender value).

Real Estate

Gifts of real estate can include homes, condominiums, apartments, undeveloped land, farmland, and rental property. Such gifts may help the donor alleviate management costs and responsibilities if the property were held, and capital gains tax and broker's fee if the property were sold.

When you give gifts of real estate, the Community Foundation in turn sells the property, and — depending on the amount — contributes the proceeds to an existing fund of your choice or opens (or increases) your own fund with the income from the sale. You receive a charitable tax deduction equal to the fair market value of the property, and you pay no capital gains tax on the sale.



Union City, Rick Mears Amphitheater



CHANGING NEEDS AND NEW OPPORTUNITIES

The Branch County Community Foundation knows the importance of preparing for financial support for community groups and programs 10, 20, 100 years from now. To do that, we need to raise dollars that can support needs we can't even imagine today. We currently hold over 130 separate "accounts," what we call funds, most of which donors set up to support particular causes or organizations. Donations to these funds are essential to our ability to meet the needs of our communities. The Community Foundation currently holds two funds created for donations that aren't allocated to any specific cause or program.

We call these types of donations "unrestricted". When donors are interested in making sure their gifts can be used for anything that improves the quality of life in our serve area, they make an "unrestricted gift". Unrestricted gifts have the broadest impact on the community because they can affect so many aspects of a vibrant community now and far into the future. Originally named the General Fund, the Forever Fund was created in 1994

by our visionary board of directors to hold unrestricted donations and make grants to meet emerging needs for all of Branch County. The Colon Foundation Fund is the other unrestricted fund designated for programs and projects that improve life in the Colon area.

Right now, the Branch County Community Foundation is actively working to increase the size of the Forever Fund through our annual Forever Fund Campaign. This way the Forever Fund can award more grants for any project or program that improves the quality of life in our service area and support the Community Foundation's work toward that goal. With support from the Forever Fund, the Community Foundation is able to participate in many local and regional groups focusing on workforce training, access to childcare and transportation, affordable housing and homelessness prevention, early childhood education, preserving our land, economic development, and much more.

Through the Forever Fund, any individual, family, or business can

be involved in philanthropy! There is an opportunity for every budget size. Anyone interested in supporting their community now and forever should contact the Community Foundation about giving to the Forever Fund or creating a new unrestricted fund.

There's so much more we'd like you to know! To learn more, you can contact us at 517-278-4517 or info@BrCoFoundation.org.



FOREVER FUND



The Forever Fund Campaign is an exciting initiative led by the Branch County Community Foundation (BCCF). Our goal is to increase the amount of grant funds available to qualifying nonprofit agencies in the Branch County area.

We have created an opportunity for every size and budget. Every dollar helps.

The Forever Fund Campaign is your opportunity to help your community. By joining us in this important initiative, you will become part of the Branch County Community Foundation family as we work together to build strong communities.

Our community is truly a treasure. The Forever Fund within the Branch County Community Foundation has a broad impact on the community because it awards grants for any project or program that improves the quality of life in our service area and it supports the Community Foundation's work toward that goal. It is the only fund where distributions aren't restricted to a specific cause. The Forever Fund creates locally controlled assets for now and to meet emerging needs. Anyone - your business, your civic organization, your family - can become involved in philanthropy!



COMMUNITY FUNDS

YOUTH ADVISORY COUNCIL

The Youth Advisory Council (YAC) is the Community Foundation's youth philanthropy program. The group consists of individuals (ages 12-21) from Branch County and Colon, Michigan. YAC is dedicated to effective grantmaking, endowment building, leadership, and improving the viability of our communities by involving youth in the visioning and decision-making process.

What is YAC?

NOT THIS →



THIS ↓

The Youth Advisory Council (YAC) is the Community Foundation's youth philanthropy program. The group consists of individuals (ages 12-21) from Branch County and Colon, Michigan. YAC is dedicated to effective grantmaking, endowment building, leadership, and improving the viability of our communities by involving youth in the visioning and decision-making process.

Text "JOIN YAC" to 517.278.4517 for more info today!

Y.A.C. YOUTH ADVISORY COUNCIL
GRANT MAKING | SERVICE LEARNING | FUND DEVELOPMENT | PHILANTHROPY

FREE food at every meeting. Seriously. FREE FOOD.

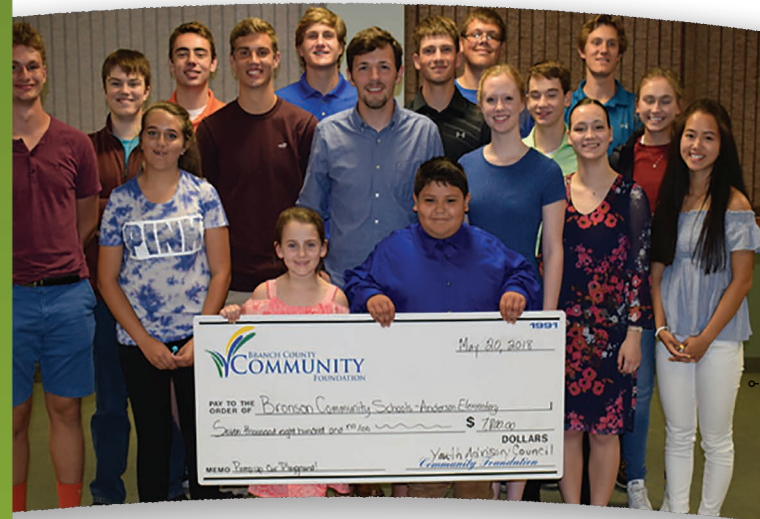
\$4000
average grant amount per organization

5
AVERAGE NUMBER OF GRANTS GIVEN PER YEAR to different organizations

80+
LOCAL ORGANIZATIONS
TOTAL GRANT RECIPIENTS TO DATE

21 THOUSAND \$\$\$
dollars in grants given last year

505,896
TOTAL YAC GRANTS GIVEN OUT TO DATE



The Youth Grant program provided \$16,800 in support to local youth projects last year.



YAC after Christmas shopping, packaging, and delivery of gifts to the Naomi Davis Home.

LEGACY SOCIETY

The Legacy Society recognizes individuals and couples who have notified us that they have included the Community Foundation as a beneficiary in their will or other deferred giving plan. You are invited to join the Legacy Society when you express your intent to provide a gift for the future of our area by naming the Branch County Community Foundation as a beneficiary through your will or other means.

How to join the Legacy Society in just two steps:

1. Arrange your estate to leave a gift to the Community Foundation.

Common ways to do this are naming the Community Foundation;

- as a beneficiary of a bequest through your will or trust or other planned gift.
- as a beneficiary in an IRA or 401K retirement plan
- as a beneficiary or owner of a life insurance policy

Legacy Society
Founding Members
Hal & Lillian Creal
(joined 2008)



2. Let us know that you have made the necessary arrangements by returning this form.

This will give us permission to include your name in future listings of the Legacy Society members.

Legacy Society members are those who have given us permission to list their names (details of gifts are always kept confidential)

Members

The following individuals are Founding Members of the Legacy Society who, joined from the Society's inception through the Community Foundation's 20th anniversary. These founders individually and collectively, encourage others to join them in making a planned gift to the Community Foundation.

Founding Members can be members of our Legacy Society Advisory Committee.

- ✓ Robert & Bridget Mayer
- ✓ Patricia Klein Shoemaker
- ✓ Hal* & Lillian Creal
- ✓ Marvin M. Rosenberg
- ✓ Marcelyn L. LaBelle
- ✓ Dr. Raymond* & Mary Jo Kranz
- ✓ Colleen Knight
- Donna Cowden

✓ Founding Members (2008-2012)
*Deceased



PRESERVING ENDOWMENTS



BCCF invests in early childhood education in our communities.

Investment Program

As stewards of over 100 separate endowed funds, the Community Foundation converts contributions into community betterment. The Community Foundation uses a sound investment strategy designed to maintain the principal balance — those gifts and contributions received from the public — while maximizing the return on these investments for current grantmaking and future growth purposes. To achieve these goals the Community Foundation assumes a level of risk aimed at maximizing investment return but that is consistent with the Uniform Prudent Management of Institutional Funds Act (UPMIFA).

All of the endowment funds of the Community Foundation are pooled for investment purposes. They are carefully, expertly, and responsibly managed in a balanced portfolio according to the Community Foundation's Investment Policy Statement (IPS). The Community Foundation's investment portfolio is designed with these goals in mind:

- preserving the inflation-adjusted value of the principal,
- assuring the investments will generate income for maximum distributions back to the community, and
- assuring enough growth to keep pace with inflation.

The Community Foundation's investment managers are charged with investing dollars based on the Board-approved IPS. For investing, we contract with Century Bank & Trust, Southern Michigan Bank & Trust, and Arcadia Investment Management Corporation, and we hold a fixed income mutual fund at Charles Schwab.

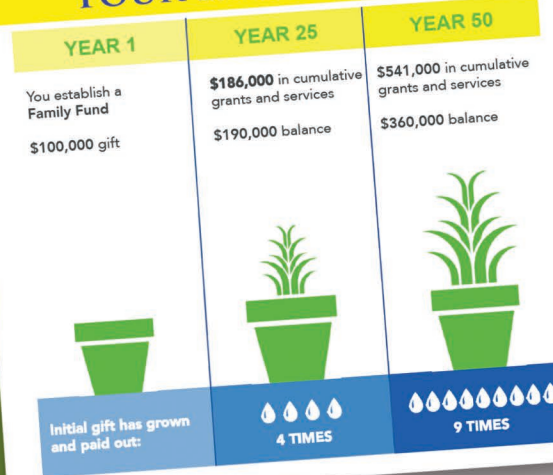
A consistent and complete review of the management and allocation of the Community Foundation resources is one of the highest priorities of operating the Community Foundation as a public trust on behalf of the donors and citizens of this community — a responsibility that is taken with the greatest sense of seriousness and professionalism. To assist us with monitoring managers' adherence to the IPS and performance of their portfolios, BCCF

contracts with GEM Asset Management, an independent financial planning and investment advisory firm (www.gemasset.net).

Independent auditors evaluate the financial position of the entire endowment, including investment activity, on an annual basis. In addition, our audit committee provides guidance and technical review of the independent audit process. This audit committee reports directly to the Community Foundation Board of Directors.

In addition to wise investment strategies, we preserve and grow our permanent endowments by limiting the distribution each year. Currently, the maximum amount available each fiscal year for spending (grants and fees) is up to 5% of the market value over an average of 20 quarters.

GROWING GIFTS THROUGH YOUR ENDOWMENT



GIVING IT FORWARD

5% can make a **\$1.4 million difference** to future generations.



The net worth of Branch County is estimated to be \$3.63 billion. Over the next 10 years, \$560 million is expected to be transferred from one generation to the next. If every estate gave just 5% to the community for future generations, Branch County Community Foundation could grant an additional \$1.4 million each year, forever.



2 W Chicago St, Ste E-1 | Coldwater, MI 49036 | 517.278.4517
www.BrCoFoundation.org

Branch County Community Foundation is accredited with the most rigorous standards in philanthropy 

CONTINUOUS GIVING

Donors below reflect years of continuous giving to the Branch County Community Foundation

Evergreen

10+Years

Paul & Kathy Bair
Deborah Balowski
Bruce & Melinda Bloom
Ray & Fran Bregger
Dr. Bosco & Lynda Chan
Hugh Epping & Deborah
Cookingham
Aaron Cummings
Dan & Judy Dobson
Kristen Dogan
Dylan & Jodi Foster
Julie Gibson
Ted & Cathy Gordon
Rachel Hard
Daniel & Marie Hemker
Kandice Kieliszewski
Mary Jo Kranz
Charles & Jayne Lillis
Larry Lynn Loviska
LeeAnne Nagle
Dale & Roberta Norton
William & Gerianne Post
Theresa Price
David & Beth Rinehart
Iona H. Robbins
Ron Rose
R. David Rumsey
Joseph & Susan Sobeske
Southern Michigan Bank & Trust
Randall L. Sowles
John & Lois Swanson
Tom & Christine Tenney
Tonia Vorce
Walmart Foundation
Paul & Connie Winbigler

Seedling

+5 Years

Thelma H. Bloom
Coldwater Kiwanis Club
Mellissa Connin
Cheryl Covell
Jack & Kathleen Ferguson
Linda Galliers
Wava Jean Gano
Mark Hacker Farms
Leigh Ann Hicks
Christine King
Mark & Shawn Knaack
Colleen Knight
Jeanette & Phillip Mainstone
Lynette Mallow
Richard & Kathleen Merrill
Midwest Optometry Group PLLC
Kevin & Patti Miller
Ron Olmsted
Carrie Preston
Doug & Ann Reiter
Georgann Reppert
Remus & Donna Rigg
Marvin M. Rosenberg
Jennifer Searls
Michelle Sheppard
Cynthia S. Smith
Josephine Marie Smith
Mindy Travelbee
Eugene & Sharon Wallace
Richard L. Wendorf
Sally Whitten

Seed

+3Years

Paula AcMoody
Alison Bassage
Linda Beemer
Jeanne Berg
George & Carole Bolton
Bruce & Danelle Bowers
Stan & Judy Bushouse
Mary Carlisle
Bruce & Beth Caswell
Century Bank & Trust
Lorraine Clyne
Coldwater On the Run
Robert C. & Kathleen L. Collins
Barbara Ann Contat
Michael G. & Alice J. Crenshaw
Charles H. & Kathleen A. Davidson
Sharon Demeester
Carl & Brenda Demlow
Connie & Peter Fellman
Mary M. Feters
Mary Fisher
Donald K. Fowler
Joe & Karen Ganger
Ralph E. & Sue Ann Greenamyer
Shana & David Grife
Polly (Schiel) Grimmer
Marjorie Harris
Barbara Harvey
Nancy Hutchins
Walter & Marjorie Inde

Linda Ives
Nathan Johnson
Kandice Kieliszewski
Jill Knaack
Marvin & Betty Malovey
Mary McCurley
Earnest A. & Sherri L. Meily
James & Marion Miller
Wayne & Karen Miller
Elaine J. Moore
Michael F. & Ann M. Nowicki
Lyle & Joyce Otis
Platz Electric Co., LLC
Diane Riegel
Janet R. & James R. Robinson
Karl Scharf
Marlin & Joan Shiery
Carolyn A. & Kerry L. Smith
Rebecca Snyder
Bernie Stankewicz
Darlene Starr
Barbara Vainner
Shirley & John C. Vandam
Elaine A. Woodcox
Dr. C. C. & Mrs. Ann Wu
Terry L. Wynn



HONORARY & MEMORIAL GIFTS

In Honor of Allie Hoag
Shana & David Grife

In Honor of Anne L. Marso
Marcie Love

In Honor of Jose Wixon
Gene & Shirley Easterday

**In Honor of Mr. Dancer (Lakeland)
and Mr. Henry (CHS)**
Shana & David Grife

**In Honor of Mrs. Biddlecome and
Mrs. Hoag**
Shana & David Grife

In Memory of Evon Pluister
Diane E. Godfrey

In Memory of Hal Creal
Jackie & Denise Downer
Susan Morton
Plante & Moran
Curt R. & Ruth Proctor

**In Memory of Helen Reiter and
In Honor of Irma English**
Doug & Ann Reiter

**In Memory of John and Mary
Dygert**
Paul & Connie Winbigler

In Memory of Kelli Loveberry
Janet L. Aemisegger
Alliance Foods, Inc.
Marcia & Ronald Allison
Avra Estates
Karen Avra
B's Shop & Fly
Richard Bean
Mary & Bruce Bell
Mary Belmonte
Shila & Mandi Boes
John & Sandra Bolton
Larry & Bonnie Bowerman
Jerry & Colleen Campbell
Rebekah Clancy
Melanie Colwell
Charles & Diane Cook
Bill Corrino
R. Clayton Coward
Larry & Sheryl Daglow
Lisa Daler
Penny Daler
Eric & Staci Davenport
Sandra & James Dufur
Arlene Fickle
Lewis & B. Joan Fink
Stephen & Christine Forrester
G & W Display Fixtures
Kevin & Bev Griggs
Jerry & Linda Grove
Larry C. Harvey
Judy Hauska
Sarah & Steven Headley
William Heffner
Hillsdale County Road Commission
Board & Management
Hillsdale Terminal
Lennie & Norie Horn
Shellie Horn
Traci Horn
Nancy Houtz
Kathleen Howard
Janice Hutchins
Brenda & Douglas Ingraham

Jim & Karice Keeslar
Patrick & Rachel Kies
Sheryl Kies
Sarah Krok
Land's End Inc.
Cathy Lennard
Jon L. & Virginia J. Loveberry
Kevin & Lori Loveberry
Joanne Lucas-Lachney
Jeanette & Phillip Mainstone
Harold & Diana Massey
Micki McCavit
Shaun & Trish McCavit
Marcia & Darel McClellan
Robert & Carol McHolme
Nick, Page, Tom & Jakie McNicholas
Earnest A. & Sherri L. Meily
Larry & Cynthia Moore
Susan Moore
Cecil & Latasha Nichols Morrison
Trish Morrison
Mike Mueller
Crysta, Maya, & Kathy Page
Kevin & Amy Paradine
Sally Parshall
Bonnie Pilaczynski
Jamie Prescott
Crystal Preston
Jason Price
Heath & Nancy Prichard
Quincy Baseball & Softball
Association
Cindy Ricketts
Shawn Rodgers
Jeffery & Teresa Rubel
Norma Rutz & Norman Green
Michelle Scheetz
Eric & Marie Scheske
Rose Shettler & Family
Jannene & Donnie Simons
Forrest & Barbara Snow

Southern Michigan Bank & Trust
Tim Strauss & Family
Sunset Cove
Melissa Sussex
Gerald & Bonnie Tryon
Timothy & Gail Tyler
R C & Susan Vanlandingham
Sean Westfal
Paul & Sonya Wittmann

In Memory of Kenneth King
Christine King

In Memory of Marv Carmen
Mark & Nicole Amsler
Susan Morton

HONORARY & MEMORIAL GIFTS

In Memory of Maureen Petzko

Lela Ash
Jeffrey & Rhonda Budd
Stan & Judy Bushouse
Don & Tina Campbell
Carter Family
Tom & Olga Champagne
Michael & Dorothy Cherry
William & Sharon Chinery
Theresa Christner
Mary Clark
Coldwater High School Staff
Gary Conley
Maxine J. Conley
Donna Cowden
Craig & Mary Dally
Dori Dally
Greg & Eileen Desmet
Rosalind Desmet
Dobson Industrial Inc.
Kelly Jo Adomeit Evans
Family of Adeline Fahnenstiel
Drus Ferguson
Jack & Kathleen Ferguson
Sarah Ferguson
Michael & Donna Galliers
Peggy Golomb
Eric & Jean Goodwin
Guzy Family
Jennifer L. & James T. Henry
Stephanie Hough
Evelyn Kaylor
Wayne Kellogg
Bill & Chris Kennedy
Knowles Family
Thomas Kramer
Bob & Bev Krauseneck
Labadie Family
Kristy LaGoe
Denise MacArthur
Tom & Susan Magocs
Karen Malantinsky
Ed & Carol Malovey
Mary & Michael McConnell
Tim & Aloha Miller
Jennifer Milligan

Ahmod & Carol Moola
Jorge Munevar
Michael L. & Theresa A. Murphy
Duane & Debbie Nizinski
Brigette & Eric Pack
John & Grace Parshall
Chris Pierce
William & Gerianne Post
Bob & Carol Puetz
Saginaw Township School
Employees
David Seaman
Slack Family
Jamie & Kelly Spray
Natalie & Troy Stanichuk
Anthony Stevens
Chris Stevens
Gordon & Pat Swan
Barb & Jim Thorburn
Joe & Carol Tinervia
Micheala & Gerado Torres-Camargo
Dianne VandenHout
Deb & Ron Vankersen
Donna Walderzak
Wednesday Morning Basketball
Group
JoAnn Wilczynski
Noel Wiley
David & Sandra Wischmeyer
Carolyn Youssef
Lee Zimmerman

In Memory of Richard Kessler

Evelyn A. & Corbin W. Grimes
Mark D. Von Waldner
Genelle L. Welch
Paul & Connie Winbigler

In Memory of Timothy John Gordon

Ted & Cathy Gordon

LIFETIME GIFTS

*indicates deceased

Philanthropist

(\$1,000,000+)
Council of Michigan Foundations
Max Larsen Trust

Humanitarian

(\$500,000+)
Thomas Bott Trust
Branch Hillsdale St. Joseph County
Health Plan
Hal* & Lillian Creal

Visionary

(\$250,000+)
Colon Community Schools
Dan & Judy Dobson
Quincy Community Schools
Southern Michigan Bank & Trust

Designer

(\$100,000+)
Estate of Joseph Bakle
Jack & Phyllis Bronson
Coldwater Township Sunrise Rotary
Foundation
James & Barbara Edgett
Glema Jones Trust
Lucile Burnside Estate
Dorothy Mannerow*
Richard L. Wendorf

Ambassador

(\$50,000+)
Asama Coldwater Manufacturing
M. Marie Bettinger Emerson
John Broker
Colon Foundation
Crotty Corporation
Elmer & Doris Houghton
John & Marguerite Kenyon Trust
Thomas E. Kolassa
Mary Jo Kranz
Marcena W. Love
Rosella McLaughlin*

Michigan Association of Retired
School Personnel
Naomi Hull Trust
Rolph Carlisle Charitable Trust
G. David & Del Laura Rubley
Patricia Shoemaker

Champion

(\$25,000+)
Altrusa International, Inc. of Branch
County
Branch Area Careers Center
Branch Intermediate School District
Jennifer Brown
Gonsala Cardenas
Century Bank & Trust
Coldwater Cardinal Booster Club
Coldwater Kiwanis Club
Coldwater Rotary Club
Colon Banking Center, a Division of
Sturgis Bank &
Emory Sechrist Scholarship Trust
Estate of Jerry Lee Morton
Wava Jean Gano
Bill Geiger
Kiwanis Club of Colon
Klein Investments
Max W. Benjamin Charitable
Remainder Unitrust
D. Lynn & Carolyn Jo Mayer
Robert & Bridget Mayer
Dr. Mary R. Moore*
Presbyterian Health Clinic of Branch
County
Gary & Lorinda Ratkowski
Stanley H.Jr. Irrevocable Trust
Reeder
Sandra J. Rice
Remus & Donna Rigg
Marvin M. Rosenberg
Jeffrey Schragg
Special Events Income
Walmart Foundation
Dr. C. C. & Mrs. Ann Wu

LIFETIME GIFTS*indicates deceased

Sponsor

(\$10,000+)

Alchem Aluminum, Inc.
Alliance Foods, Inc.
Dr. & Mrs. Peter Baldwin
David & Sharon Bates
Bloom Farms, LLC
Gordon Bowerman Family
Branch County Great Start
Collaborative
Branch-Hillsdale-St. Joseph County
Health Plan
Ray & Fran Bregger
Bronson Alumni Association
Ross D. & Marilyn L. Byers Ttees
Edward* & Nancy Callahan
Barry & Jo Ann Case
Dr. Bosco & Lynda Chan
City of Coldwater
Coldwater American Amateur
Baseball Congress Feder
Coldwater Downtown Development
Authority
Coldwater Exchange Club
Coldwater Township Sunrise Rotary
Club
Communities for Youth on the Edge
of Success
Corporation for Supportive Housing
Cummings Family Foundation
Dennis & Jennifer Dafnis
Steve & Mary Ann M. Dobson
Early Bird Exchange Club
James & Anne R. Freiburger
G & W Display Fixtures
Joe & Karen Ganger
Ricky L Gates
Raymond & Cindy Gentz
Gokoh Coldwater, Inc.
Wilbur & Allie Hostettler
Mildred G. Hutchins
Marcelyn LaBelle Knight
James* & Janice* Koss
Dr. Edward Lake
Larsen Unitrust
Livonia Tool, Inc.
Lloyd & Vera Luce Trust Estate
Michigan State University
Midwest Optometry Group PLLC
Monarch Community Bank
Charles & Susan Morton
William Oates
Raymond Pontoni
Curt R. & Ruth Proctor
Quincy Community Schools
Quincy Rotary Club
Wayne & Christine Reese
James* & Sandra Rice
Jan Rhoads
Iona H. Robbins
Robert Corson Trust
R. David Rumsey
Phillip & Jeanette Sattler
Schipper Funeral Home LTD.
Ted Schipper
William & Patricia Shoemaker
Sintered Metal Products, Inc.
Elizabeth Teeter
John Teeter
Tom & Christine Tenney
Vanguard, LLC
Eugene & Sharon Wallace
Wisconsin Public Service Foundation

DONORS (from 10/1/2017 through 9/30/2018)

A

Paula AcMoody
Janet L. Aemisegger
Alliance Foods, Inc.
Marcia & Ronald Allison
AmazonSmile Foundation
Mark & Nicole Amsler
Asama Coldwater Manufacturing
Lela Ash
Marilyn Ashdown
Avra Estates
Karen Avra

B

B's Shop & Fly
Paul & Kathy Bair
Estate of Joseph Bakle
Deborah Balowski
Alison Bassage
Lori Bassage
David & Sharon Bates
Richard Bean
Linda Beemer
Mary Bell
Mary Belmonte
Ronald & Kay Bercaw
Jeanne Berg
Jim & Jacqueline Bilsborrow
David K Binder
Dennis Black
Bruce & Melinda Bloom
Douglas & Sharon Bloom
Thelma H. Bloom
Shila & Mandi Boes
George & Carole Bolton
John & Sandra Bolton
Carol G. Borden
Larry & Bonnie Bowerman
Bruce & Danelle Bowers
Branch County Abstract &
Title, Inc.
Branch County Association of
Realtors
Branch Co. Coalition Against
Domestic & Sexual Violence
Branch Hillsdale St. Joseph
County Health Plan
Irene & Kevin Brayton
Ray & Fran Bregger

Jeffrey & Rhonda Budd
Stan & Judy Bushouse
Karen Buys

C

Don & Tina Campbell
Jerry & Colleen Campbell
Mary Carlisle
Donna Carlson
Carter Family
Karmen Case
Bruce & Beth Caswell
Central Conveyor
Century Bank & Trust
Century Bank & Trust Employees
Tom & Olga Champagne
Dr. Bosco & Lynda Chan
Richard Chard
CHBW & Co, P.C.
Chemical Bank
Michael & Dorothy Cherry
William & Sharon Chinery
Theresa Christner
City of Coldwater
Rebekah Clancy
Mary Clark
Lorraine Clyne
Coldwater High School Staff
Coldwater Kiwanis Club
Coldwater On the Run
Coldwater Rotary Club
Coldwater Sunrise Rotary Projects
James & Pamela Cole
Robert C. & Kathleen L. Collins
Melanie Colwell
Gary Conley
Maxine J. Conley
Melissa Connin
Barbara Ann Contat
Charles & Diane Cook
Hugh Epping & Deborah
Cookingham
Bill Corrino
Cheryl Covell
R. Clayton Coward
Donna Cowden
Michael G. & Alice J. Crenshaw
Aaron Cummings

DONORS

D

Larry & Sheryl Daglow
Lisa Daler
Penny Daler
Craig & Mary Dally
Dori Dally
Eric & Staci Davenport
Charles H. & Kathleen A.
Davidson
Sharon Demeester
Carl & Brenda Demlow
Greg & Eileen Desmet
Rosalind Desmet
Kay Dirschell
Dobson Industrial Inc.
Dan & Judy Dobson
Kristen Dogan
Jackie & Denise Downer
DTE Energy
Sandra & James Dufur
Thomas & Phyllis Duke

E

Julianna Eagan
Gene & Shirley Easterday
Etna Supply
Kelly Jo Adomeit Evans

F

Family of Adeline Fahnenstiel
Connie & Peter Fellman
Drus Ferguson
Jack & Kathleen Ferguson
Sarah Ferguson
Mary M. Fetters
Arlene Fickle
Lewis & B. Joan Fink
Mary Fisher
Stephen & Christine* Forrester
Dylan & Jodi Foster
Donald K. Fowler
Fowlerville Medical Center
Fowlerville Pharmacy
James & Anne R. Freiburger
Patricia Furney

G

G & W Display Fixtures
Linda Galliers
Michael & Donna Galliers
Galloup
Joe & Karen Ganger
Wava Jean Gano
GEM Asset Management, LLC
Susan & Don Germann
Julie Gibson
Jane R. & Carl W. Gillette
Diane E. Godfrey
Peggy Golomb
Eric & Jean Goodwin
Ted & Cathy Gordon
Ralph E. & Sue Ann Greenamyre
T.C. Greenburg
Shana & David Grife
Kevin & Bev Griggs
Evelyn A. & Corbin W. Grimes
Polly (Schiel) Grimmer
Jerry & Linda Grove
Mary L. Guthrie
Guzy Family

H

Mark Hacker Farms
Thomas & Nancy Hadley
Rachel Hard
Harmon Real Estate
Marjorie Harris
Barbara Harvey
Larry C. Harvey
Mary Haupt
Judy Hauska
Jake & Cora Jean Haylett
Sarah & Steven Headley
William Heffner
Daniel & Marie Hemker
Jennifer L. & James T. Henry
Leigh Ann Hicks
Sharon Hillquist
Hillsdale County Road
Commission Board and
Management
Hillsdale Terminal
Hopkins, Yeager, & Smith P.C.

Freeman D Hopkins
Lennie & Norie Horn
Shellie Horn
Traci Horn
Stephanie Hough
Nancy Houtz
Kathleen Howard
Janice Hutchins
Nancy Hutchins

I

Walter & Marjorie Inde
Brenda & Douglas Ingraham
Linda Ives

J

M. Susan & Daniel E. Jacoby
Ronald E. & Joy E. Johns
Nathan Johnson
Joshua D. & Carrie L. Jones

K

Evelyn Kaylor
Jim & Karice Keeslar
Wayne Kellogg
Bill & Chris Kennedy
Kandice Kieliszewski
Patrick & Rachel Kies
Sheryl Kies
Christine King
Jill Knaack
Mark & Shawn Knaack
Colleen Knight
Knowles Family
Thomas Kramer
Mary Jo Kranz
Bob & Bev Krauseneck
Sarah Krok
John W. Kruse

L

Labadie Family
Kristy LaGoe
Land's End Inc.
Larsen Unitrust
Cathy Lennard

Lilah's Bridal
Charles & Jayne Lillis
Zoe E. Livermore
W.J. & Elnore Loose
Joseph & Lisa Lopez
Marcena W. Love
Jon L. & Virginia J. Loveberry
Kelli Loveberry*
Kevin & Lori Loveberry
Larry Lynn Loviska
Joanne Lucas-Lachney

M

Denise MacArthur
Tom & Susan Magocs
Jeanette & Phillip Mainstone
Karen Malantinsky
Lynette Mallow
Ed & Carol Malovey
Marvin & Betty Malovey
Fredrick & Linda Mason
Harold & Diana Massey
Robert & Bridget Mayer
James K. & Donna M. McAfee
Micki McCavit
Shaun & Trish McCavit
Marcia & Darel McClellan
Mary & Michael McConnell
Mary McCurley
Alisha McGlothlan
Robert & Carol McHolme
Earnest A. & Sherri L. Meily
Nick, Page, Tom & Jakie
Mcnicholas
Richard & Kathleen Merrill
Michigan Gas Utilities Corp.
Midwest Optometry Group PLLC
David Miller
James & Marion Miller
Kevin & Patti Miller
Lisa Miller / MMK Consulting
Group
Tim & Aloha Miller
Wayne & Karen Miller
Jennifer Milligan
Ahmod & Carol Moola
Elaine J. Moore
Larry & Cynthia Moore

DONORS

Susan Moore
Patricia Morrill
Patricia & Charles Morrill
and Marnie Evans
Cecil & Latasha Nichols Morrison
Trish Morrison
Susan Morton
Mike Mueller
Jorge Munevar
Michael L. & Theresa A. Murphy

N

LeeAnne Nagle
Nelson's Collision
Network For Good
Wallace & Candace Newkirk
Duane & Debbie Nizinski
Dale & Roberta Norton
Michael F. & Ann M. Nowicki
Nu-Air
Numatics

O

Ron Olmsted
Lyle & Joyce Otis

P

Brigette & Eric Pack
Crystal, Maya, & Kathy Page
Kevin & Amy Paradine
John & Grace Parshall
Sally Parshall
Perennial Landscape Company
S.R. & M.M. Phillips
Chris Pierce
Bonnie Pilaczynski
Plante & Moran
Platz Electric Co., LLC
William & Gerianne Post
Mary Alice Powell
Jamie Prescott
Carrie Preston
Crystal Preston
Jason Price
Theresa Price
Heath & Nancy Prichard
Curt R. & Ruth Proctor
Bob & Carol Puetz

Q

Quincy Baseball and Softball
Association
Quincy Collision, LLC
Quincy Rotary Club

R

Randy's Service Station
Doug & Ann Reiter
Georgann Reppert
Jon A. Rick
Cindy Ricketts
Diane Riegel
Bernadette Rieger
Remus & Donna Rigg
Zachary William Rigot
David & Beth Rinehart
RL Deppmann
Iona H. Robbins
Janet R. & James R. Robinson
Shawn Rodgers
Ron Rose
Marvin M. Rosenberg
RS Dale
Jeffery & Teresa Rubel
R. David Rumsey
Norma Rutz & Norman Green

S

Saginaw Township School
Employees
Phillip* & Jeanette Sattler
Karl Scharf
Catherine A. Schaupp
Michelle Scheetz
Eric & Marie Scheske
Thomas & Clare Schmelzer
David Seaman
Jennifer Searls
Michelle Sheppard
Rose Shettler & Family
Marlin & Joan Shieri
Jannene & Donnie Simons
Slack Family
Steven & Thelma Smalla
Carolyn A. & Kerry L. Smith
Cynthia S. Smith
Josephine Marie Smith

Patricia Smith
William R. & Kim P. Smith
Forrest & Barbara Snow
Rebecca Snyder
Joseph & Susan Sobeske
Southern Michigan Bank & Trust
Randall L. Sowles
Spag's
Jamie & Kelly Spray
Nancy Sprow
St. Agnes Catholic Church
Natalie & Troy Stanichuk
Bernie Stankewicz
Darlene Starr
Stephanie Dysinger Insurance
Agency Inc
Janette Stephens Trust
Anthony Stevens
Chris Stevens
Tim Strauss & Family
Donald Streets
Sunset Cove
Melissa Sussex
Gordon & Pat Swan
John & Lois Swanson

T

Techmatic
Lois Tell
Tom & Christine Tenney
Barb & Jim Thorburn
Mike Tighe
Joe & Carol Tinervia
TJ Old Millrace LP
Linda Todd
Ruth Todd
Micheala & Gerado Torres-Camargo
Miranda Townsend
Mindy Travelbee
Gerald & Bonnie Tryon
Timothy & Gail Tyler

V

Barbara Vainner
Shirley & John C. Vandam
Dianne VandenHout
Deb & Ron Vankersen
R C & Susan Vanlandingham
Mark D. VonWaldner
Tonia Vorce

W

Donna Walderzak
Walker Family Foundation
Eugene & Sharon Wallace
Walmart Foundation
Wednesday Morning Basketball
Group
Genelle L. Welch
Richard L. Wendorf
Sean Westfal
Sally Whitten
Robbin S. Wilber
JoAnn Wilczynski
Noel Wiley
Ronald & Kathleen Will
Craig & Stephanie Winbigler
Paul & Connie Winbigler
David & Sandra Wischmeyer
Kevin & Abbie Wischmeyer
Paul & Sonya Wittmann
Elaine A. Woodcox
Dr. C. C. & Mrs. Ann Wu
Kenneth & Judy Wyant
Terry L. Wynn

Y

Todd Young
Carolyn Youssef

Z

James C. Zabonick
Lee Zimmerman

WHY COLON, WHY BRANCH COUNTY?

Many donors wonder why they send their gifts to the Branch County Community Foundation when they live in the Colon area. Many other donors wonder why the Branch County Community Foundation serves an area that is in St. Joseph County. It's a long beautiful relationship which continues to benefit both Branch County and the Colon area.

Creation of Branch County Community Foundation

In 1991, five Branch County Rotaries met in an historic luncheon to create the Community Foundation. Many of the early board members had strong relationships to the Colon area, and Branch County was able to create a fund within the existing Colon Foundation allowing the Branch County Community Foundation to receive donations while they could establish their non-profit status and become certified as a Community Foundation. The Branch County Community Foundation was established as a stand-alone organization in late 1992.

Kellogg and Council of Michigan Foundations Youth Project Match

Through the Council of Michigan Foundations (CMF) and the W.K. Kellogg Foundation's Youth Project, donations to funds within community foundations throughout the state of Michigan would receive a 50% match to create funds for youth activities. The Branch County Community Foundation received the first matching grant in 1995 and established the Youth Advisory Council (YAC) to oversee the grant making process for the newly created Youth

Fund and to encourage youth volunteerism and philanthropy.

Colon and Branch County Unite Again

About that same time in 1995, a gift was given to the Colon Community Schools to be used as an endowment fund for scholarships for Colon graduates. Realizing that the Colon School Board was not in the business of managing endowments, it was suggested that the Colon School Board turn the money over to the Colon Foundation in order to receive the matching W.K Kellogg Foundation grant funds toward a YAC fund. However the grant required that the community foundation's director work at least 20 hours per week. Colon Foundation could not fulfill that requirement. The Colon Foundation knew Branch County had a full-time director and presented the Branch County Community Foundation with the idea of creating funds for the Colon area. When the Boards of Colon Schools, Branch County Community Foundation, and Colon Foundation agreed the Colon Foundation became a component fund of the Branch County Community Foundation.

The partnership allowed donations to the Colon funds to be eligible for the Kellogg match, increasing the Youth Fund and expanding its scope to Colon. And that year, in large

part because of the partnership with the Colon Foundation, Community Foundation assets reached over \$1,000,000, growing the collective investment power. On November 22, 1995, the Colon Express quoted then Branch County Community Foundation Executive Director Coco Cook as saying "residents of Branch County and Colon will benefit from a new partnership...[as] the Colon Foundation has become a geographic component fund of the Branch County Community Foundation." Grants and scholarships were being awarded regularly and the Youth Advisory Council (YAC) had 47 members – the second largest in the state!

Continuing Strong Ties

As of the end of fiscal year 2018, assets in the Community Foundation have grown to \$7 million dollars in over 130 funds. Together these funds have awarded over \$14 million dollars in grants and scholarships to assist organizations and students in our entire service area. By holding different funds with different focuses, donors have the opportunity to give to specific funds benefiting a cause, a city or village, a project, a specific organization, or to help grow unrestricted funds for both Colon and Branch County. Together we continue to build stronger communities in both Branch County and the Colon area!



Magic is everywhere in Colon! The Abbott's Magic Company, the Colon Lions Club and the Colon Chamber of Commerce are proud to celebrate the Annual Abbott's Magic Get-Together. The 82nd year of the event will take place in August 2019.

SUPPORTING OUR COMMUNITY



Civil War Days Education Day

How did our grant make a difference to your organization?

"We had 1,414 school-aged children attend this year's Education Day event. None of this would be possible without your help. And because of this help, we are able to reach out farther and farther to bring more and more children to our event. Along with this, it allows us to add new and exciting things to this event so we can bring history alive for these young people. None of this would be possible without your help."

Coldwater Community Schools LMS Robotics Team support

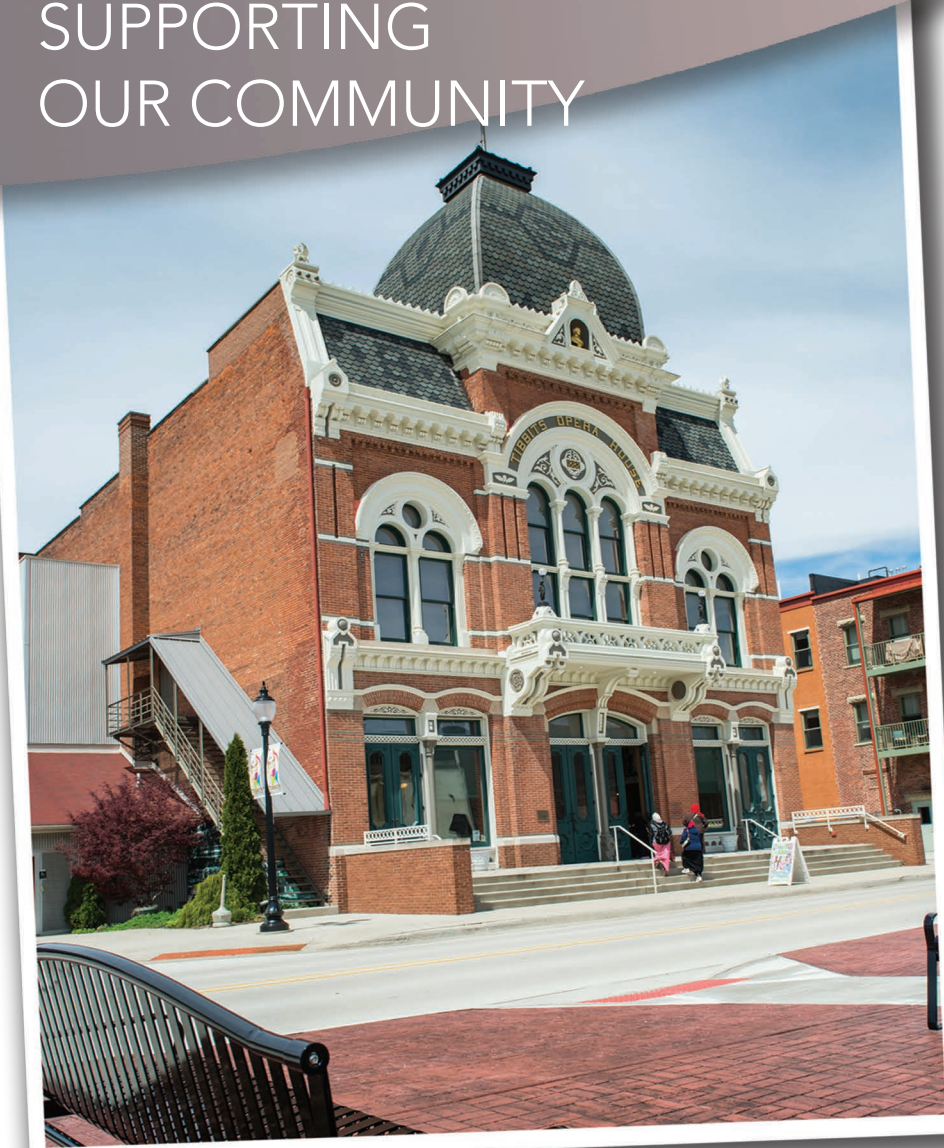
How did our grant make a difference to your organization?

"The purpose of the project was to start a robotics team at the middle school level, and increase students interest in STEM activities, as well as provide a solid foundation for youth moving to the high school level for their robotics team. The LMS Robotics team participated in their first regional event on November 18, 2017. To all those involved, it was a highly successful first event with many challenges and learning experiences."

"The grant provided time-sensitive funds that enabled the team to immediately begin recruiting and drafting ideas. It allowed students who otherwise may have been deterred by costs associated with starting or joining a team to do so without fear of being turned away. It has provided a solid foundation for learning above-and-beyond the traditional walls of the middle school, and encourages them to stretch their abilities and promotes teamwork amongst these individuals. The students who are committed to this team have shown great pride in what they have been able to accomplish and will continue to be leaders in future years as new students join the team or they move on to the high school level."



SUPPORTING OUR COMMUNITY



Tibbits Opera Foundation Boiler Replacement

How did our grant make a difference to your organization?

"As a nonprofit, Tibbits depends on community support. The challenge with a project of this scope is raising the necessary funds without impacting the annual giving and event fundraising which represents 30 percent of the operating budget. "

FISCAL YEAR 2018 FINANCIALS

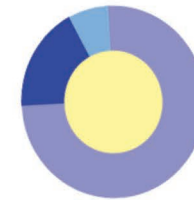
Total Assets by Class



Permanent (Endowed)

Non-Permanent (Non-Endowed)

Expenses



Program Services (Grants & Scholarships)

Fundraising

General & Management (Admin)

Key indicators are extracted from annually audited financial statements and exclude inter-fund gifts and grants.

A copy of our 990 and audited financial statements are available on our website or upon request.





BrCoFoundation.org

Email: info@BrCoFoundation.org

Call: 517.278.4517